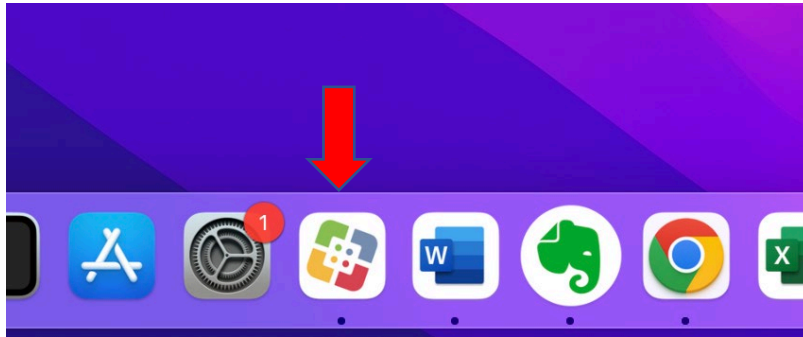
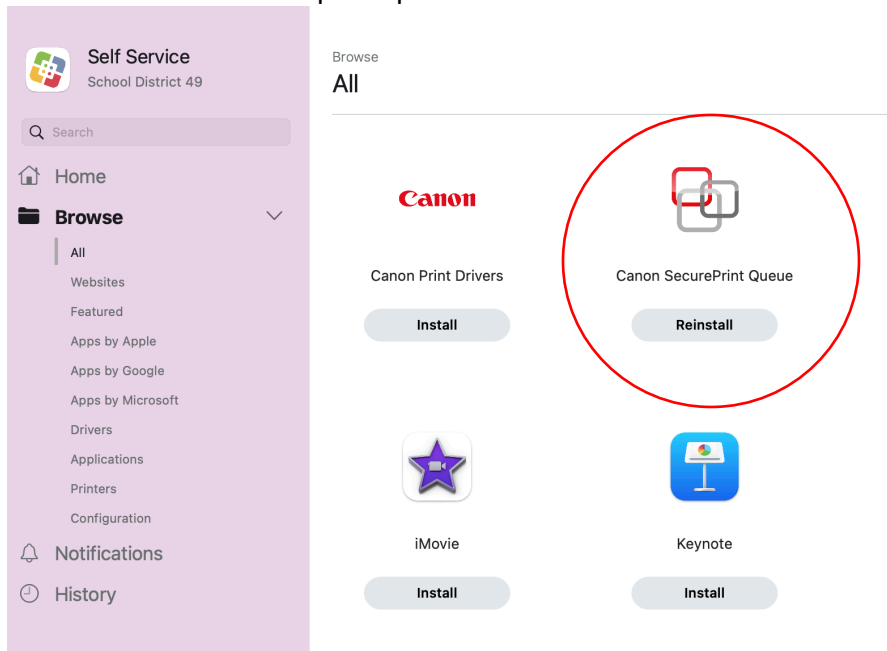


## UPDATED CANON SECURE PRINT INSTALL INSTRUCTIONS FOR MAC

Go to your Self Service application:

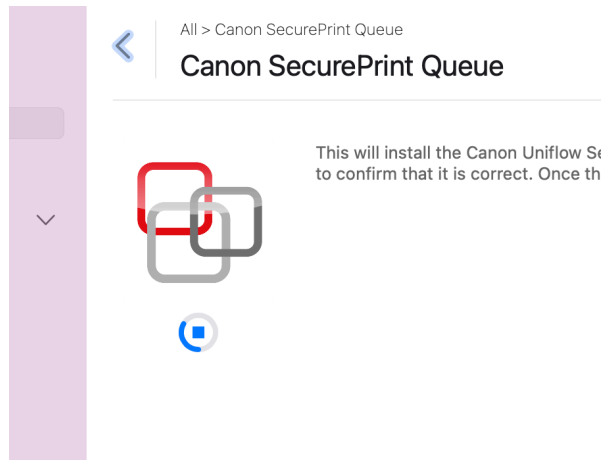


Find the canon secure print queue icon

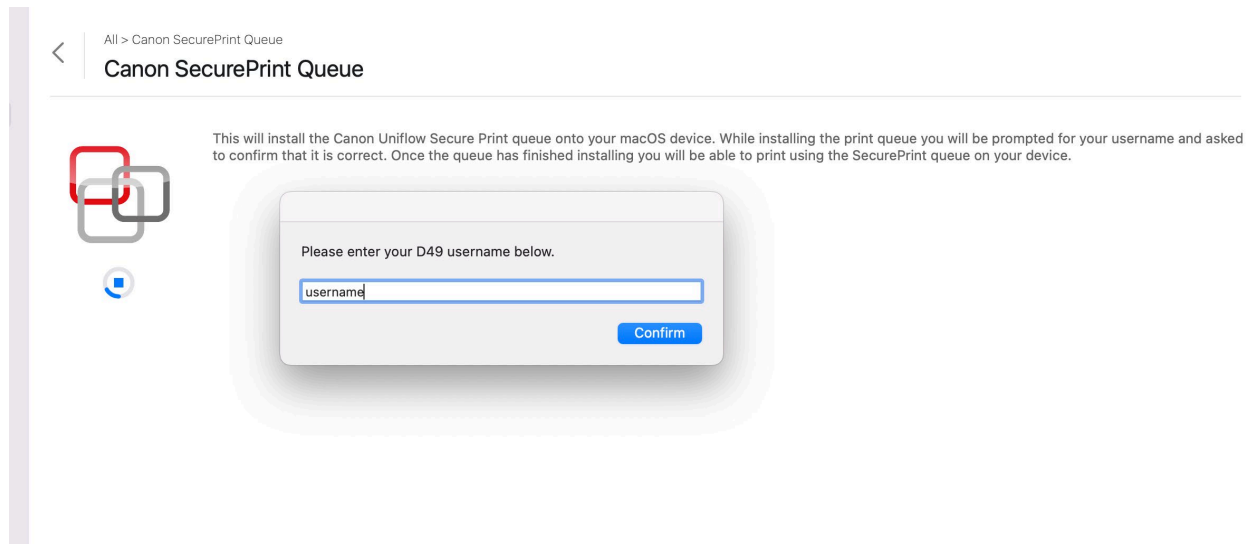


## UPDATED CANON SECURE PRINT INSTALL INSTRUCTIONS FOR MAC

Once you click on the install button, you will see the spinning icon for several minutes. Please allow time for it to complete and don't close the window,

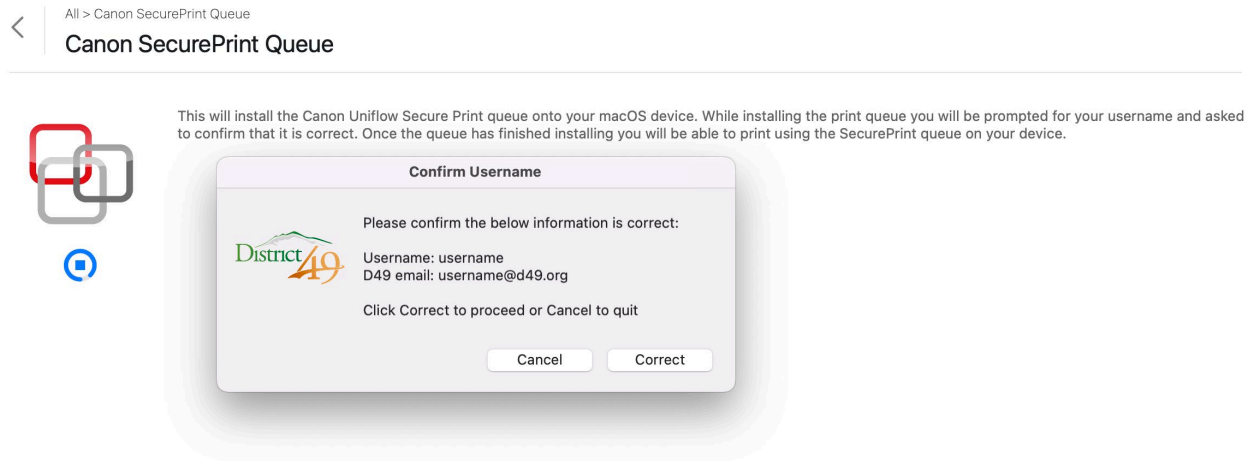


You will then get a popup asking for just your username. This is your Active Directory aka Gmail username without the d49.org:

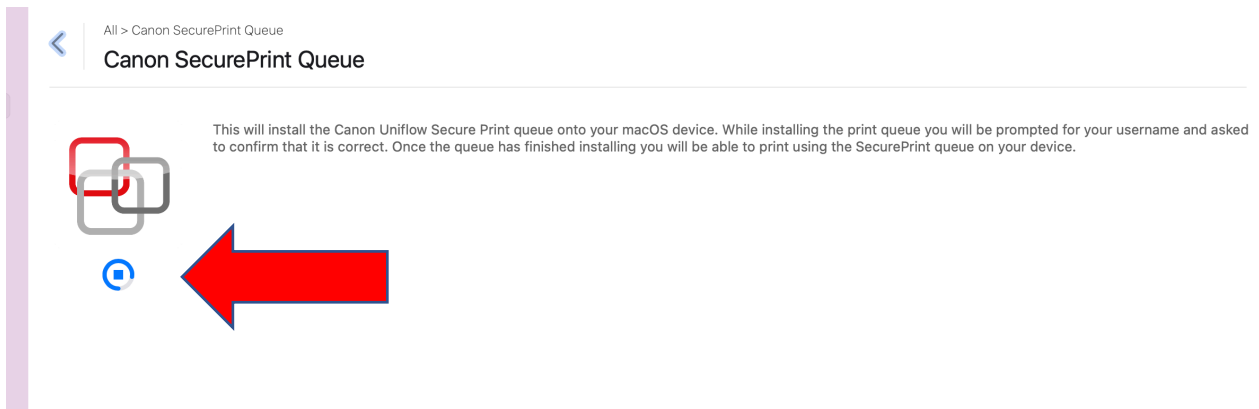


## UPDATED CANON SECURE PRINT INSTALL INSTRUCTIONS FOR MAC

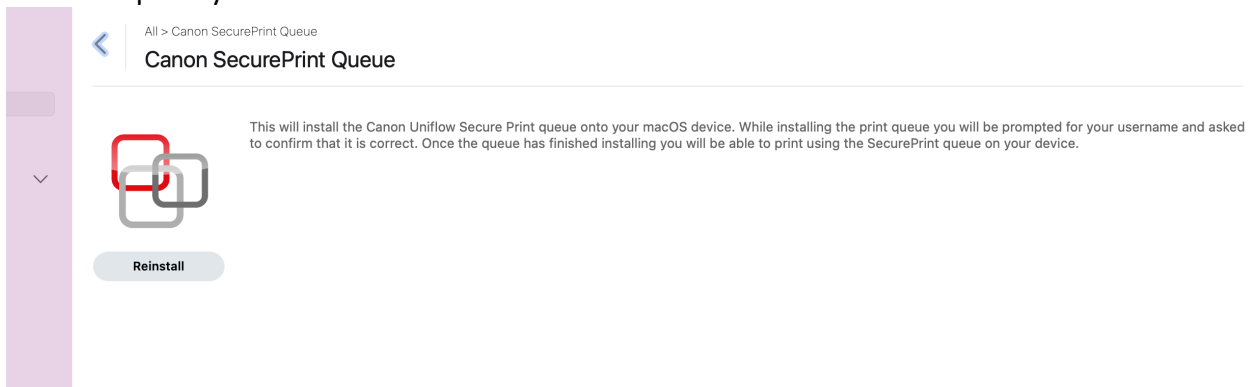
Once you click confirm, you will be presented a screen asking you to double check you typed in the username correctly. If you did not, you can hit cancel and start over.



Once you confirm your information you will be returned to the status screen for another few minutes. Please do not close the screen out.

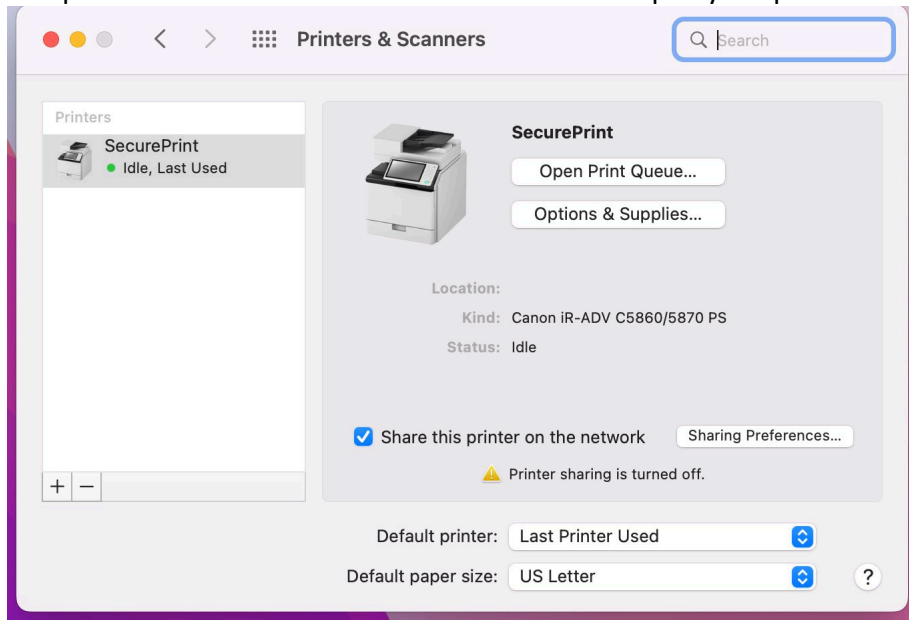


Once complete you should see this.

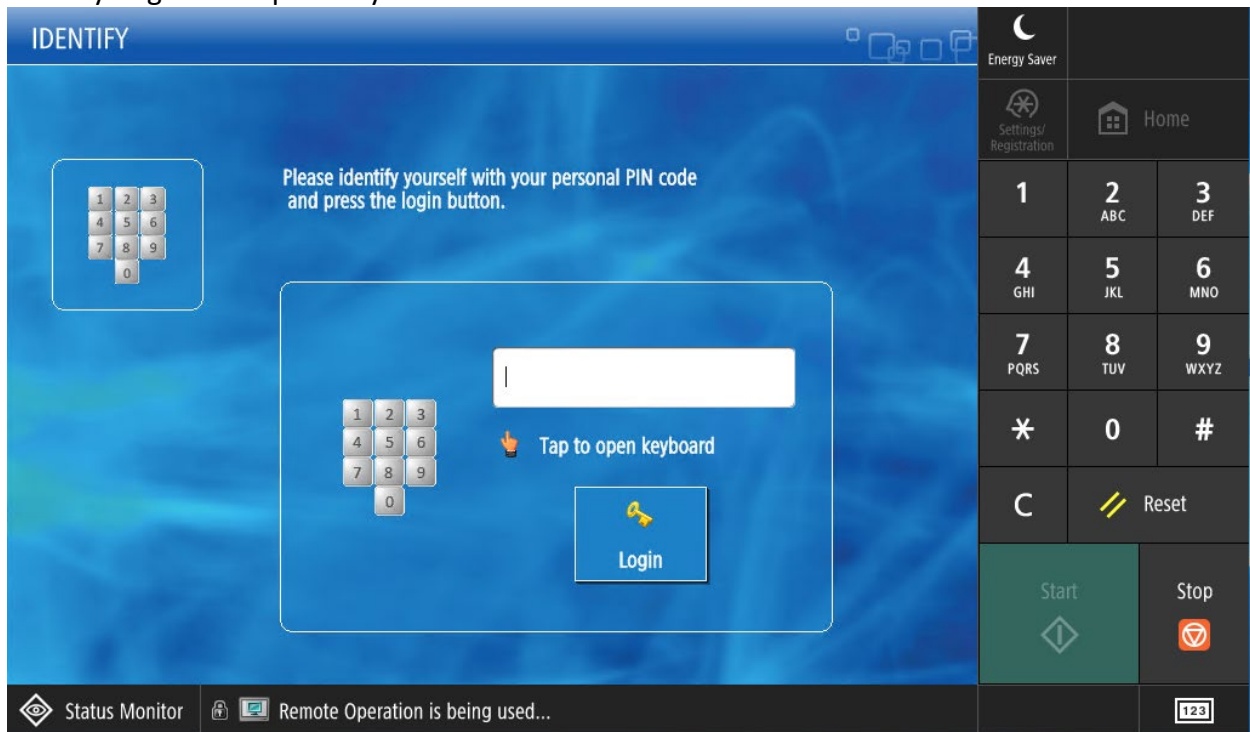


## UPDATED CANON SECURE PRINT INSTALL INSTRUCTIONS FOR MAC

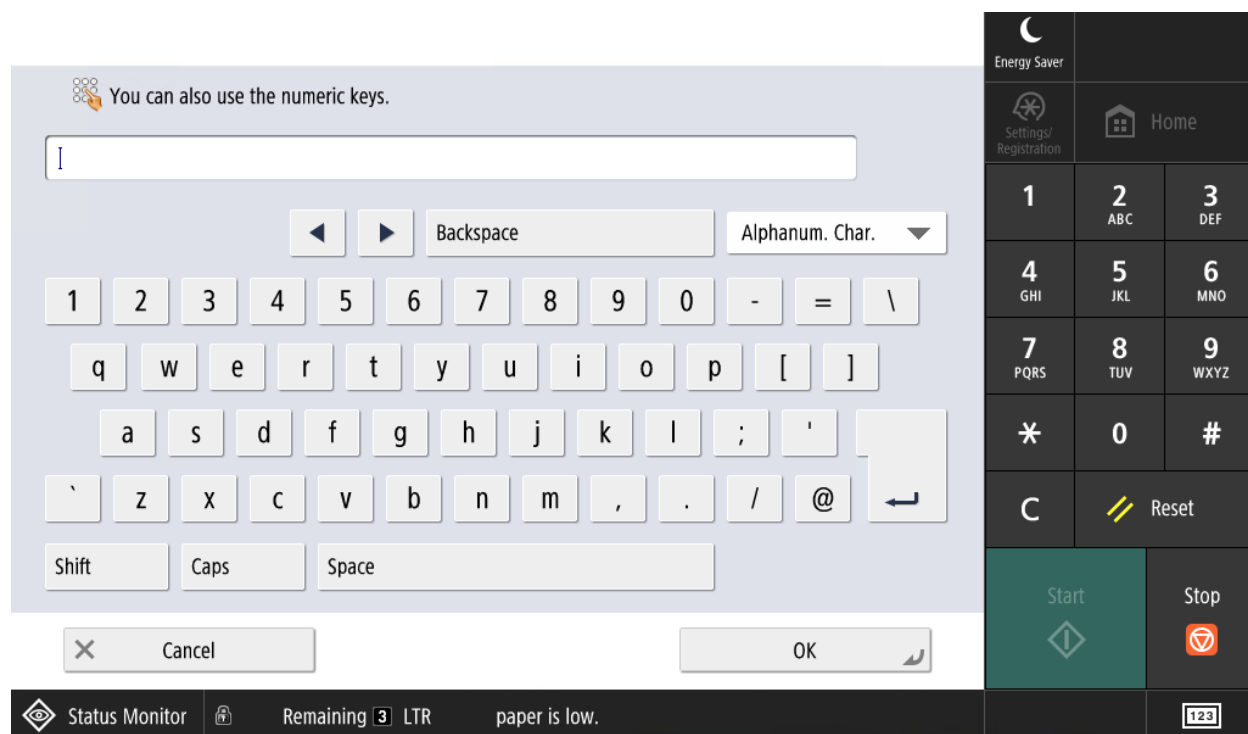
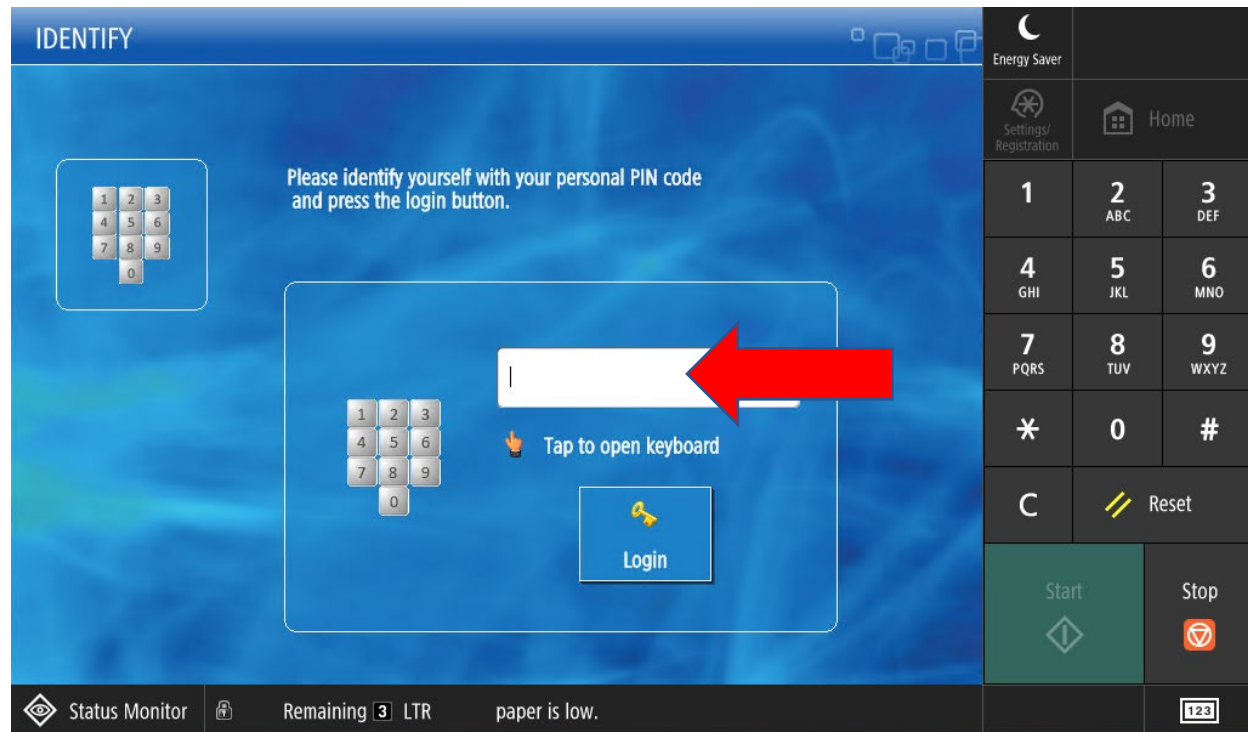
The printer and correct driver should now show up in your printers:



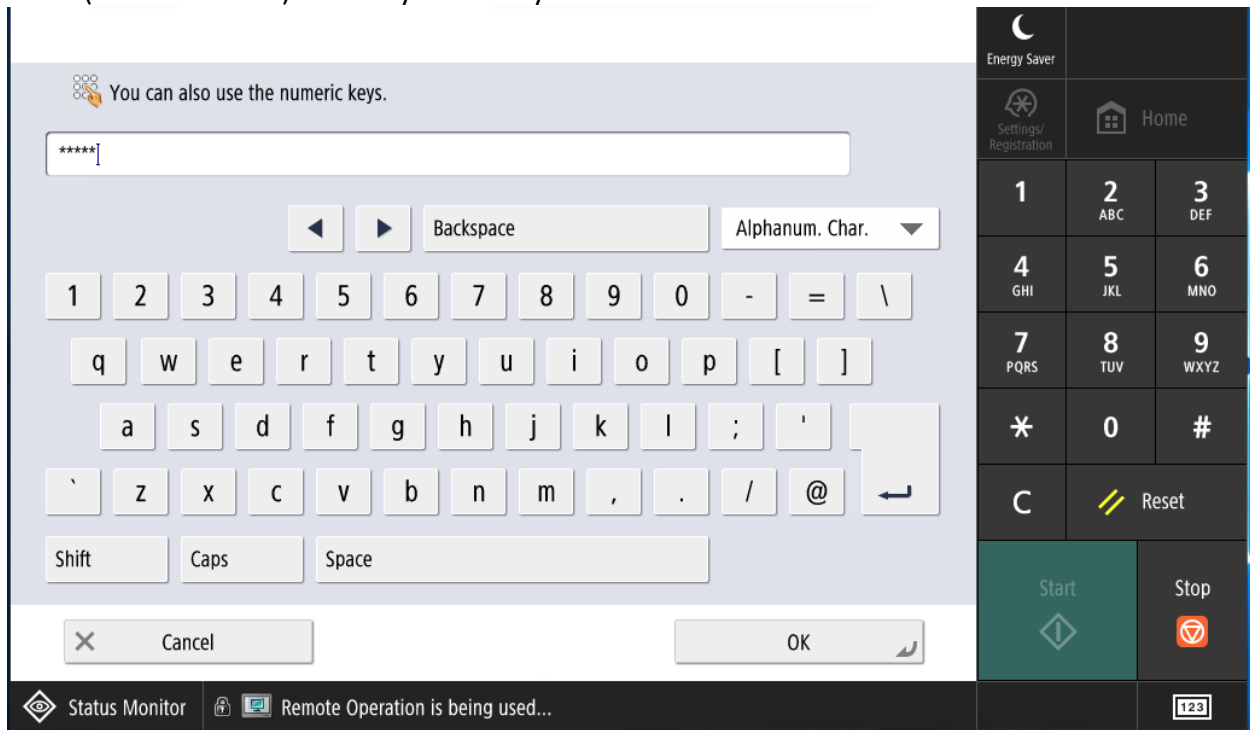
When you go to the printer you will see this screen:



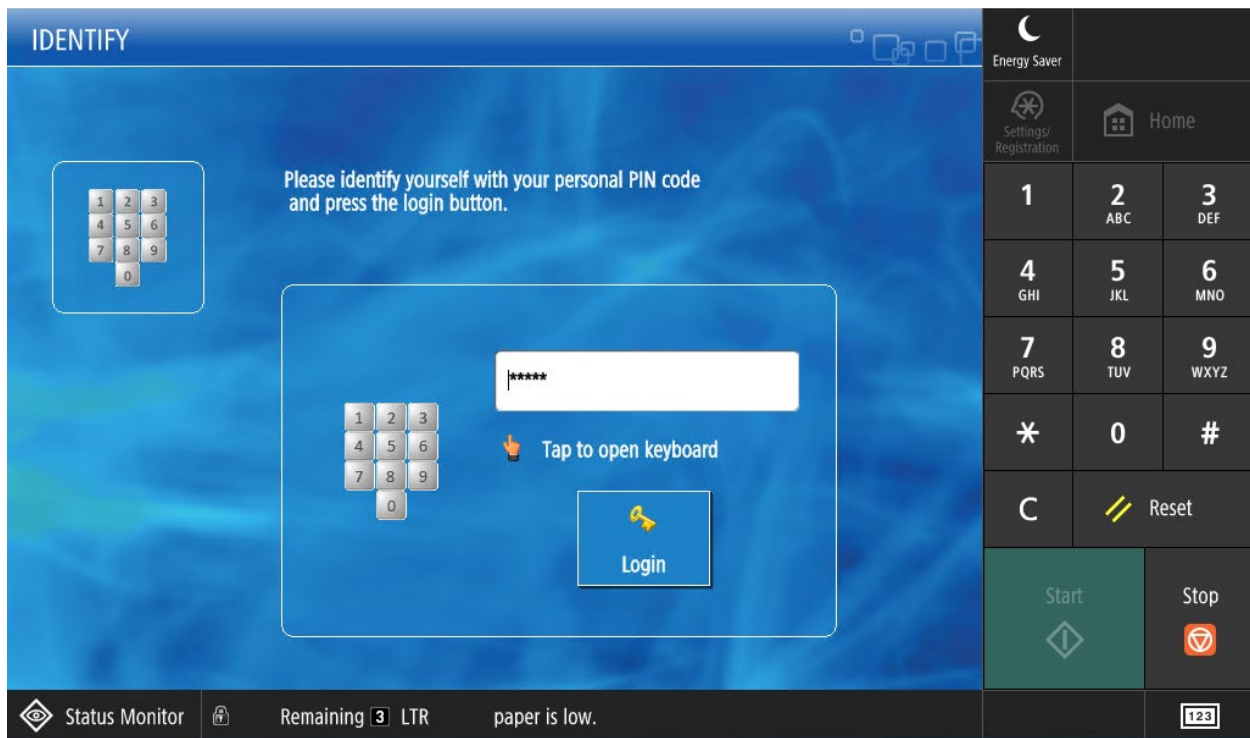
Press in the open space to reveal the on screen keyboard:



Use the shift key and you will need to enter your employee ID with a Capital E and any leading zeros (aka E0012345). When you enter your id hit the ok button:

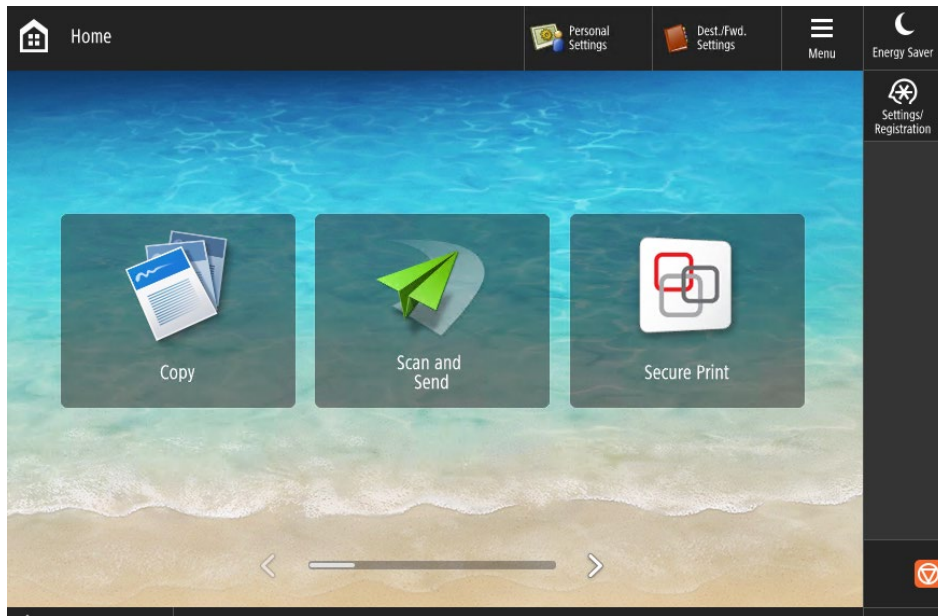


You will be brought back to this screen. Click login:

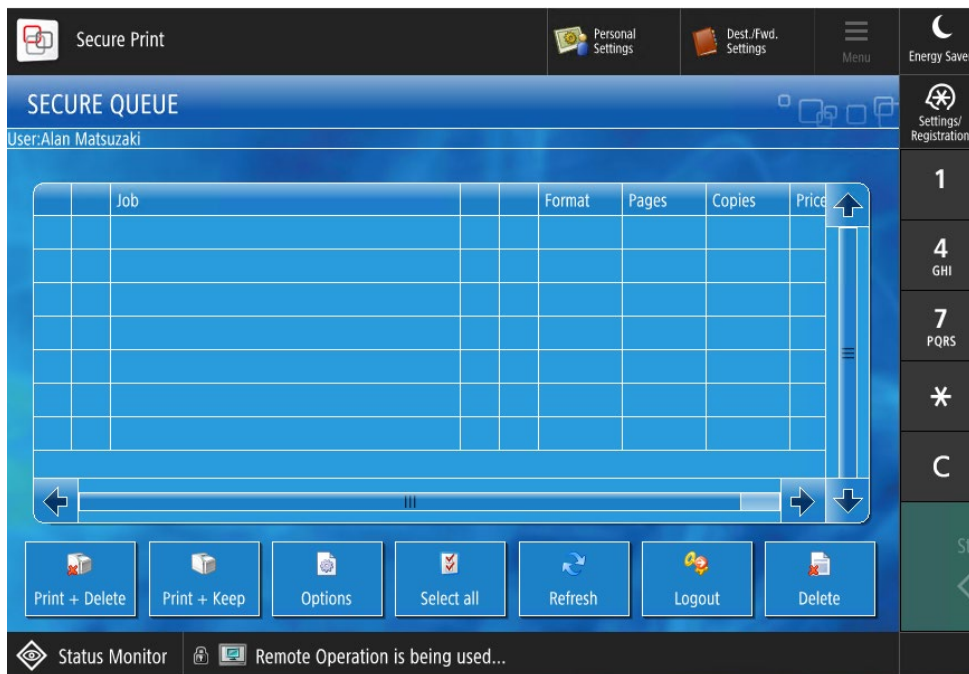


## UPDATED CANON SECURE PRINT INSTALL INSTRUCTIONS FOR MAC

If your login works you'll be able to see the printer options:



Click on the Secure Print button and any pending print jobs less than 10 hours old will show up for you to be able to select and print:



End of document.